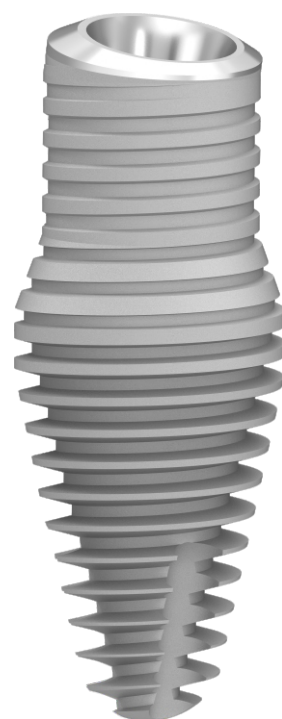


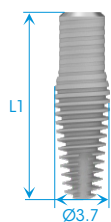


SOUTHERNIMPLANTS®

Innovative Treatment Solutions

DEEP CONICAL
INVERTA® Implants
Product Catalogue





IV-DC30-37xx

(where xx is implant length)

Implant Range

NOTE: implant dimensions and information - page 25.

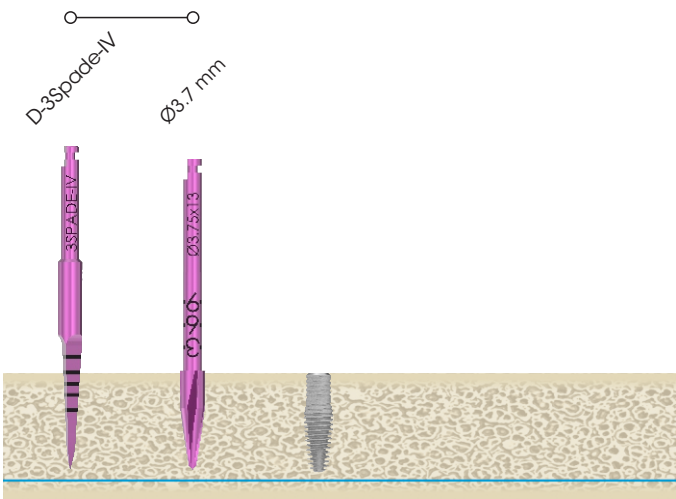
Regular implants

ITEM CODE	IMPLANT LENGTHS (in mm) L1
IV-DC30-3708	8.0
IV-DC30-3710	10.0
IV-DC30-3711	11.5
IV-DC30-3713	13.0
IV-DC30-3715	15.0

Site Preparation Sequence






Ø3.0 mm - Ø3.7mm
(IV-DC30-37xx)

Soft, Medium and Dense Bone



NOTE: site preparation sequence recommended by Southern Implants® does not replace the judgement and experience of the surgeon.

Surgical Components

Cover Screw	Healing Abutments			TOP Healing Abutments
CS-DC3	HA-DC3-Nx	HA-DC3-x	HA-DC3-Wx	HA-PKR2-DC3
	Ø3.0	Ø3.5	Ø4.0	(laterals)
				
	4/6 lengths	2/4/6 lengths	2/4/6 lengths	PEEK (packaged with retaining screw)

NOTE: TORQUE to 10 Ncm ONLY.

(where x is length)

DIRECT

Healing Abutments

HA-DC3-N



HA-DC3



HA-DC3-W

TOP
Healing
AbutmentsHA-PKR2-DC3
(laterals)PEEK*
*Screw torque:
15 Ncm
(packed with
retaining
screw)

Impression Copings

IC-DC3



(pick-up)

ICT-DC3



(Transfer)

IC-DC3-W



(pick-up)

ICT-DC3-W



(Transfer)

SFT-DC3
(scanning flag)

Titanium

Laboratory Analogues

LA-DC3



LAD-DC3

(digital
analogue)

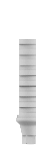
Prosthetic Components

GC-DC3
(engaging)
GC-NDC3
(non-engaging)

Gold

TC-DC3-1
(engaging)
TC-NDC3-1
(non-engaging)

Titanium

PKR-DC3
(engaging)
PKR-NDC3
(non-engaging)

PEEK*

*Screw torque:
15 NcmSIB-DC3-40C1.5
(engaging)
SIB-NDC3-40C1.5
(non-engaging)Ø4.0 platform
1.5 mm collarSIB-DC3-40C3
(engaging)
SIB-NDC3-40C3
(non-engaging)Ø4.0 platform
3 mm collarSIB-DC3-45C3
(engaging)
SIB-NDC3-45C3
(non-engaging)Ø4.5 platform
3 mm collarSIB-DC3-45C5
(engaging)
SIB-NDC3-45C5
(non-engaging)Ø4.5 platform
5 mm collarTIBS-DC3-C1.5
(engaging)

1.5 mm collar

TIBS-DC3-C3
(engaging)

3 mm collar

CAB-DC3
(engaging)

Retaining Screws

TS-DC3-14

Titanium
Torque
20 Ncm

BS-DC3-14

Brass*
*(Blackened and
for laboratory
use only)TOP
AbutmentsAngulated Screw
Channel
AbutmentPASSIVE
Abutment
5-Piece KitPKR-TOP2-DC3
(laterals)

PEEK*

*Screw torque: 15 Ncm

ASC-DC3



(packed with screw)

PA-DC3
(engaging)
PA-NDC3
(non-engaging)

(packed with screws)

ASC Abutment Screw
TS-DC3-ASCTitanium
Torque
20 Ncm

Passive Abutment Screws

PA-DC3-14T

Titanium
Torque
20 Ncm

PA-DC3-14B

(anodised yellow
and for laboratory
use only)

NOTE: refer to CAT-1189 for Equator overdenture abutments.

INDIRECT

Compact
Conical
Abutments

MC-DC3



1/3/4/5

MC-DC3-20D*



MC-DC3-30D*

* Packed with
TS-DC3-MCTORQUE:
20 NcmHealing
Caps

HMC



4/6

OR

HMCT7



4/6

Impression
CopingsCMC1
(pick-up)CMC2
(transfer)CMC-ZG-2
(transfer)SFT-MC-48
(scanning flag)MC-48
TitaniumLaboratory
Analogues

LSMC1



LAD-MC

(digital
analogue)

GMC1



Gold

Prosthetic
Components

TMC1 / 5

Titanium
TMCSL
(long version)

PKR-MC-48

PEEK*
*Screw torque:
10 - 15 Ncm

SIB-TMC1



1 mm collar

PA-MC-48

(passive abutment)

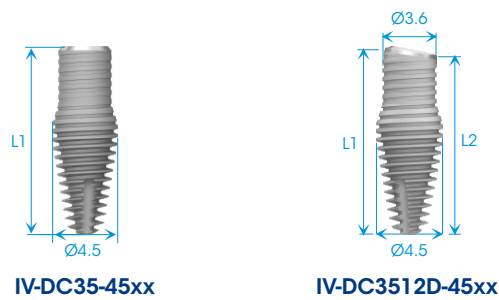
ASC-TMC1
(angulated screw channel abutment)

(packed with screw)

Retaining
Screws1 Series
ScrewsTORQUE:
10 - 15 Ncm

TST1-ASC

TORQUE:
10 - 15 Ncm



(where xx is implant length)

Implant Range

NOTE: implant dimensions and information - page 25.

Regular implants

ITEM CODE	IMPLANT LENGTHS (in mm)
	L1
IV-DC35-4508	8.0
IV-DC35-4510	10.0
IV-DC35-4511	11.5
IV-DC35-4513	13.0
IV-DC35-4515	15.0

Co-Axis® implants

(premouted with a fixture mount)

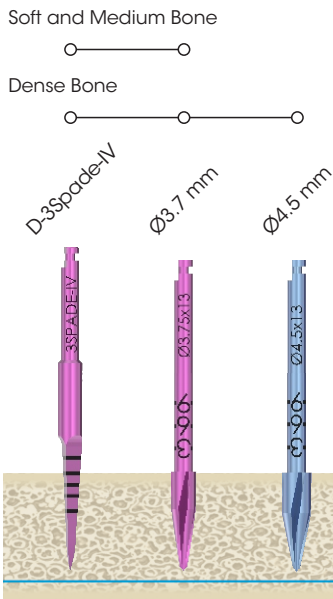
ITEM CODE	IMPLANT LENGTHS (in mm)	
	L1	L2
IV-DC3512D-4511	11.5	10.86
IV-DC3512D-4513	13.0	12.36
IV-DC3512D-4515	15.0	14.36

NOTE: all Co-Axis® implants are packed with fixture mount.
See page 24 for additional information.

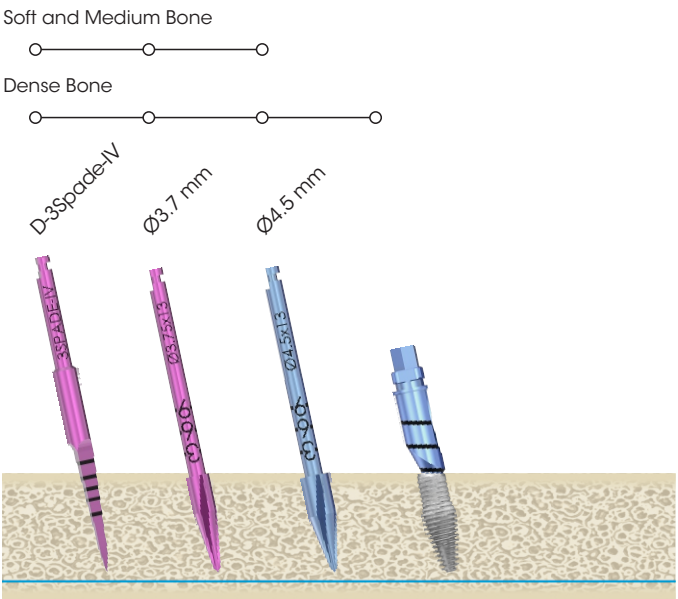
Site Preparation Sequence

(illustrations are for 13 mm implants)

Ø3.5 mm - Ø4.5 mm Tapered
(IV-DC35-45xx)



Ø3.5 mm - Ø4.5 mm Tapered Co-Axis®
(IV-DC3512d-45xx)



NOTE: site preparation sequence recommended by Southern Implants® does not replace the judgement and experience of the surgeon.

Surgical Components

Cover Screw

CS-DC4

Healing Abutments

HA-DC4-N2

Ø4.0

HA-DC4x

Ø4.5

4/6 lengths

HA-DC4-Wx

Ø5.5

2/4/6 lengths

TOP Healing Abutments

HA-PKR1-DC4

(centrals)

HA-PKR2-DC4

(laterals)

HA-PKR3-DC4

(canines)

HA-PKR4-DC4

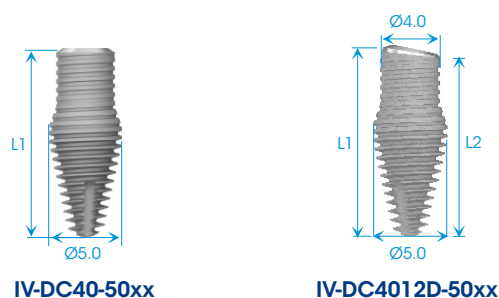
(premolars)

PEEK

(packaged with retaining screw)

(where x is length)

NOTE: TORQUE to 10Ncm ONLY.



IV-DC40-50xx

IV-DC4012D-50xx

(where xx is implant length)

Implant Range

NOTE: implant dimensions and information - page 25.

Regular implants

ITEM CODE	IMPLANT LENGTHS (in mm) L1
IV-DC40-5008	8.0
IV-DC40-5010	10.0
IV-DC40-5011	11.5
IV-DC40-5013	13.0
IV-DC40-5015	15.0

Co-Axis® implants

(premounted with a fixture mount)

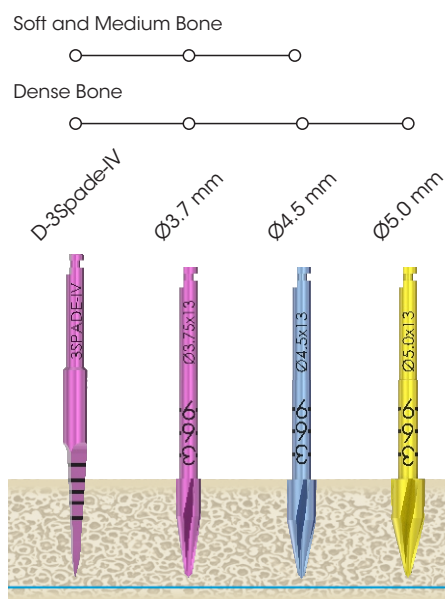
ITEM CODE	IMPLANT LENGTHS (in mm) L1	L2
IV-DC4012D-5011	11.5	10.86
IV-DC4012D-5013	13.0	12.36
IV-DC4012D-5015	15.0	14.36

NOTE: all Co-Axis® implants are packed with fixture mount.
See page 24 for additional information.

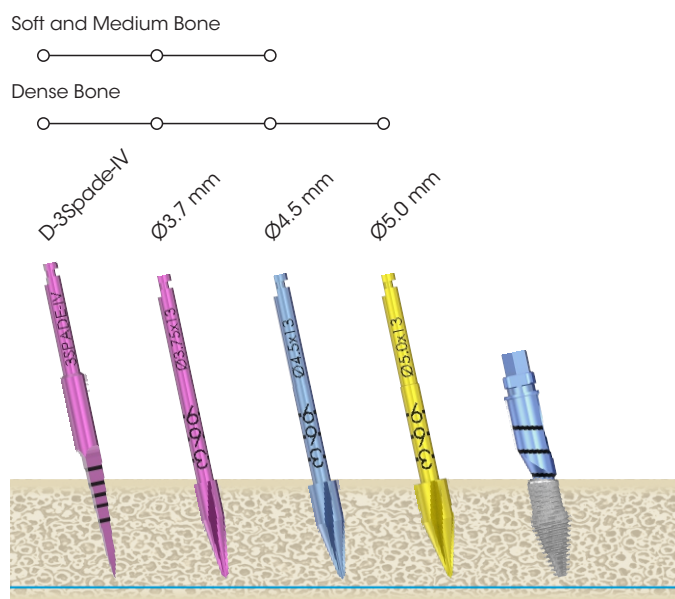
Site Preparation Sequence

(illustrations are for 13 mm implants)

Ø4.0 mm - Ø5.0 mm Tapered (IV-DC40-50xx)



Ø4.0 mm - Ø5.0 mm Tapered Co-Axis® (IV-DC4012d-50xx)


NOTE: site preparation sequence recommended by Southern Implants® does not replace the judgement and experience of the surgeon.

Surgical Components

Cover Screw

CS-DC4



Healing Abutments

HA-DC4-N2

Ø4.0



HA-DC4x

Ø4.5


4/6
lengths

HA-DC4-Wx

Ø5.5


2/4/6
lengths

TOP Healing Abutments

HA-PKR1-DC4

(centrals)



HA-PKR2-DC4

(laterals)



HA-PKR3-DC4

(canines)



HA-PKR4-DC4

(premolars)


PEEK
(packaged with retaining screw)

(where x is length)

NOTE: TORQUE to 10Ncm ONLY.

DIRECT

Healing Abutments

HA-DC4-N2



HA-DC4



HA-DC4-W

TOP
Healing
AbutmentsHA-PKR1-DC4
(centrals)HA-PKR2-DC4
(laterals)HA-PKR3-DC4
(canines)HA-PKR4-DC4
(premolars)

PEEK*

*Screw torque:
20 Ncm(packed with
retaining
screw)

Impression Copings

IC-DC4



(pick-up)

ICT-DC4



(transfer)

IC-DC4-W

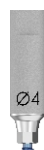


(pick-up)

ICT-DC4-W



(transfer)

SFT-DC4
(scanning flag)

Titanium

Laboratory Analogues

LA-DC4



LAD-DC4

(digital
analogue)

Prosthetic Components

GC-DC4
(engaging)
GC-NDC4
(non-engaging)

Gold

TC-DC4-1
(engaging)
TC-NDC4-1
(non-engaging)

Titanium

PKR-DC4
(engaging)
PKR-NDC4
(non-engaging)

PEEK*

*Screw torque: 20 Ncm

SIB-DC4-43C1.5
(engaging)
SIB-NDC4-43C1.5
(non-engaging)Ø4.3 platform
1.5 mm collarSIB-DC4-43C3
(engaging)
SIB-NDC4-43C3
(non-engaging)Ø4.3 platform
3 mm collarSIB-DC4-48C3
(engaging)
SIB-NDC4-48C3
(non-engaging)Ø4.8 platform
3 mm collarSIB-DC4-48C5
(engaging)
SIB-NDC4-48C5
(non-engaging)Ø4.8 platform
5 mm collarTIBS-DC4-C1.5
(engaging)

1.5 mm collar

TIBS-DC4-C3
(engaging)

3 mm collar

TIB-DC4
(engaging)
TIB-NDC4
(non-engaging)

0.6 mm collar

TIB-DC4-C1.5
(engaging)
TIB-NDC4-C1.5
(non-engaging)

1.5 mm collar

TIB-DC4-C3
(engaging)
TIB-NDC4-C3
(non-engaging)

3 mm collar

CAB-DC4
(engaging)PKR-TOP1-DC4
(centrals)TOP
AbutmentsPKR-TOP2-DC4
(laterals)PKR-TOP3-DC4
(canines)PKR-TOP4-DC4
(premolars)

PEEK*

*Screw torque: 20 Ncm

Angulated Screw
Channel
Abutment

ASC-DC4



(packed with screw)

PA-DC4
(engaging)
PA-NDC4
(non-engaging)

(packed with screws)

PASSIVE
Abutment
5-Piece Kit

Retaining Screws

TS-DC4-16



Titanium

Torque
30 Ncm

BS-DC4-16



Brass*

*(Blackened and
for laboratory
use only)

ASC Abutment Screw

TS-DC4-ASC



Titanium

Torque
30 Ncm

Passive Abutment Screws

PA-DC4-16T

Titanium
Torque
30 Ncm

PA-DC4-16B

(anodised blue
and for laboratory
use only)

NOTE: refer to CAT-1189 for Equator overdenture abutments. For Anatomical abutments refer to CAT-1138.

INDIRECT

Compact
Conical
Abutments

MC-DC4



1/3/4/5

MC-DC4-20D*



MC-DC4-30D*

* Packed with
TS-DC4-MCTORQUE:
30 NcmHealing
Caps

HMC



4/6

OR

HMCT7



4/6

Impression
CopingsCMC1
(pick-up)CMC2
(Transfer)CMC-ZG-2
(Transfer)SFT-MC-48
(scanning flag)

Titanium

Laboratory
Analogues

LSMC1



LAD-MC

(digital
analogue)

GMC1



Gold

Prosthetic
Components

TMC1 / 5

Titanium
TMC SL
(long version)

SIB-TMC1



1 mm collar

PA-MC-48

(passive abutment)



ASC-TMC1

(angulated screw channel abutment)



(packed with screw)

PKR-MC-48



PEEK*

*Screw torque:
10 - 15 NcmRetaining
Screws1 Series
ScrewsTORQUE:
10 - 15 Ncm

TST1-ASC

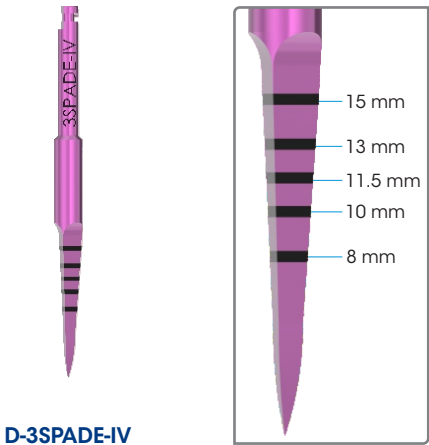
TORQUE:
10 - 15 Ncm

DRILL INFORMATION

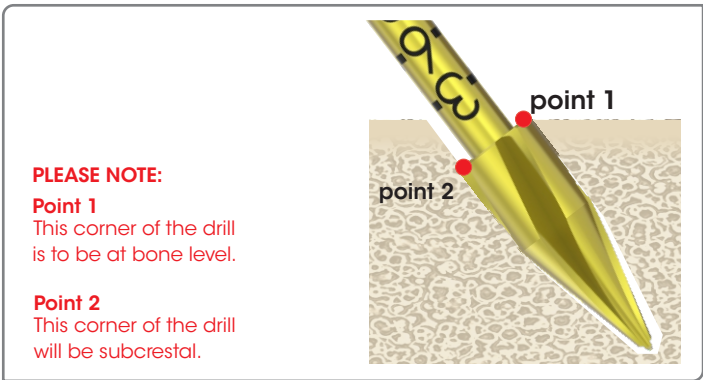
Pilot Drill

Pilot Drill markings

Final tapered drill position for Co-Axis® implants



D-3SPADE-IV

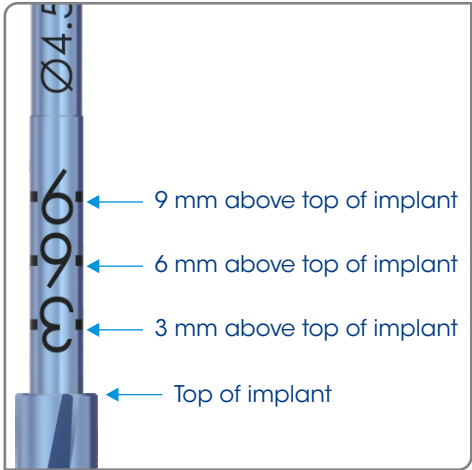


Tapered Drills

Tapered Drill markings

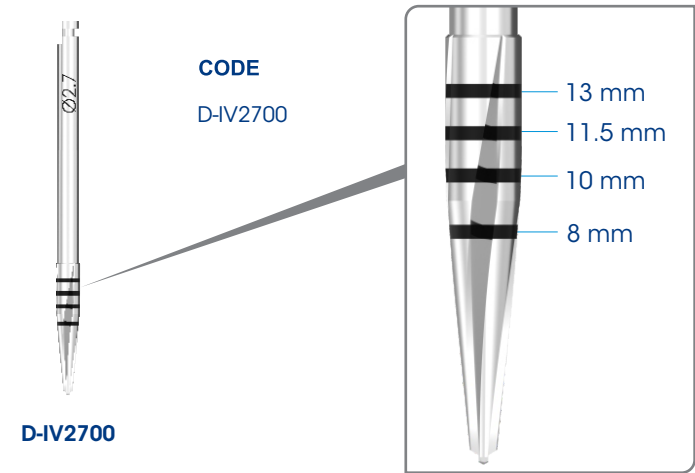


- CODES**
- D-IV3708/10/11/13/15
 - D-IV4508/10/11/13/15
 - D-IV5010/11/13/15
 - D-IV6010/11/13/15



Optional Drill

Drill markings



INSTRUMENTATION

Co-Axis® implants fixture mount



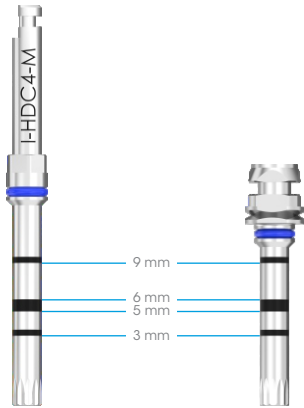
IV-DC3512D-45xx



IV-DC4012D-50xx

NOTE: fixture mount is colour coded as per prosthetic interface.

Insertion tool depth markings



Laser markings at 3 mm, 5 mm, 6 mm and 9 mm from implant platform.

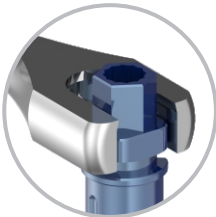
Instruments for implants packaged with a fixture mount

Engaging the SQUARE

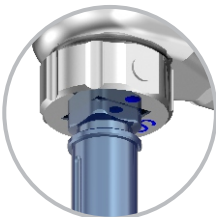
Engaging the DOUBLE HEX

Engaging the HEX

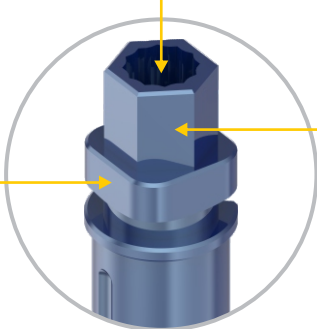
For securing the fixture mount while loosening the fixture mount screw. (I-SP-X)



For implant insertion with the torque wrench. (I-TWS and I-WI-SS)



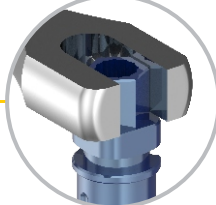
Use for implant insertion with insertion tools. (I-HDCx / I-HDCx-GS / I-WI-HDCx)



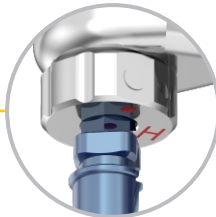
For implant insertion with insertion tool. (I-CON-X)



For securing the fixture mount while loosening the fixture mount screw. (I-SP-X)

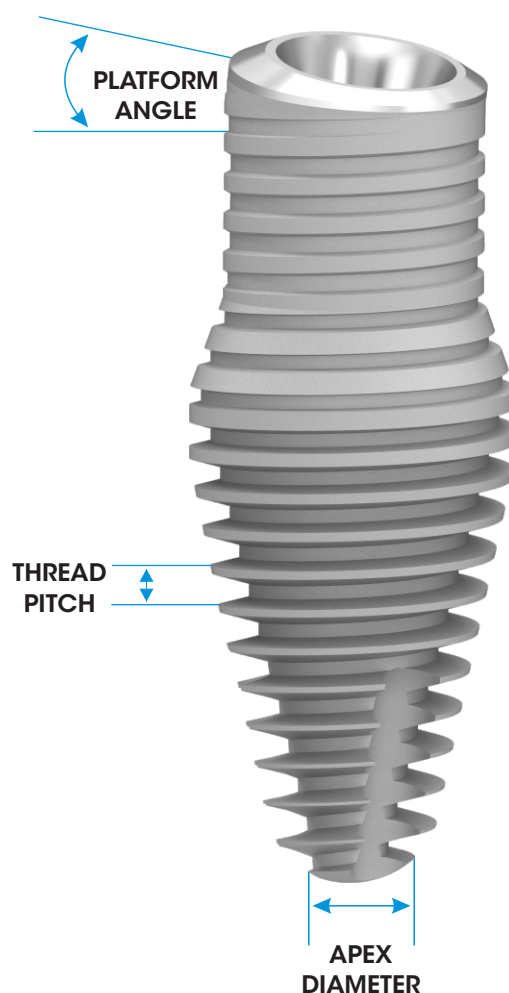
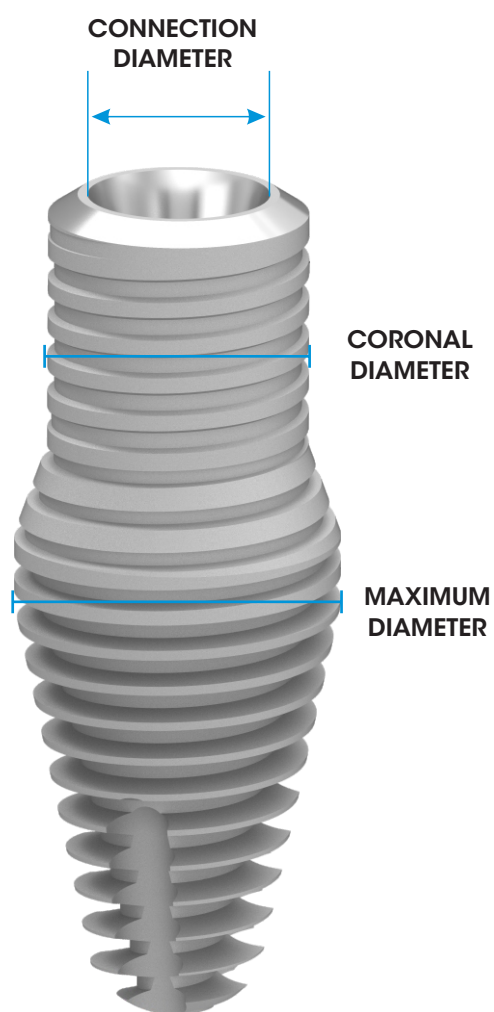


For implant insertion with the torque wrench. (I-TWS and I-WI-SH)



NOTE: for images of instruments illustrated here, refer to instrument tray pages (20 - 22).

RANGE		CORONAL DIAMETER	MAXIMUM DIAMETER	PROSTHETICS	CONNECTION DIAMETER	THREAD PITCH	APEX DIAMETER	PLATFORM ANGLE	IMPLANT LENGTHS				
									8	10	11.5	13	15
● IV-DC30-37	Ø3.0 mm - Ø3.7 mm	3.0	3.75	● Ø3.0 mm	2.3	0.6	2.6	0°	✓	✓	✓	✓	✓
● IV-DC35-45	Ø3.5 mm - Ø4.5 mm	3.6	4.5	● Ø3.5/Ø4.0 mm	2.8	0.6	2.6	0°	✓	✓	✓	✓	✓
● IV-DC40-50	Ø4.0 mm - Ø5.0 mm	4.0	5.0	● Ø3.5/Ø4.0 mm	2.8	0.6	2.6	0°	✓	✓	✓	✓	✓
● IV-DC50-60	Ø5.0 mm - Ø6.0 mm	5.0	6.0	● Ø5.0 mm	3.8	0.6	3.13	0°		✓	✓	✓	✓
● IV-DC3512D-45	Ø3.5 mm - Ø4.5 mm	3.6	4.5	● Ø3.5/Ø4.0 mm	2.8	0.6	2.6	12°			✓	✓	✓
● IV-DC4012D-50	Ø4.0 mm - Ø5.0 mm	4.0	5.0	● Ø3.5/Ø4.0 mm	2.8	0.6	2.6	12°			✓	✓	✓

**NOTE:**

- all dimensions in this catalogue are in mm, unless otherwise specified.
- not all products are cleared for sale in all countries.

For more information scan the below



to contact your Southern Implants Representative
or visit southernimplants.com



South Africa – Headquarters 1 Albert Road, Irene, RSA
T: +27-12-667-1046 | **E:** info@southernimplants.com



Southern Implants Europe AB Holmgatan 30, S-791 71, Falun, Sweden
E: ecrep@southernimplants.com

Subsidiaries

Australia

Southern Implants Australia
T: +61-2-8076-9337
E: info@southernimplants.com.au

Spain and Portugal

Southern Implants Ibérica
T: +34 935 053 507
E: info@southernimplants.es

United Kingdom and Ireland

Southern Implants UK
T: +44-20-8899-6845 / 6 / 7
E: info@southernimplants.co.uk

USA and Canada

Southern Implants North America Inc.
T: +1-561-472-0990
E: customercare@southernimplants.com

Southern Implants® are distributed world-wide, please visit southernimplants.com for a list of Distributors.

For the latest and full assortment of Southern Implant® products, visit our current resources library at southernimplants.com.